

# DHM9Bd10

## FEATURES

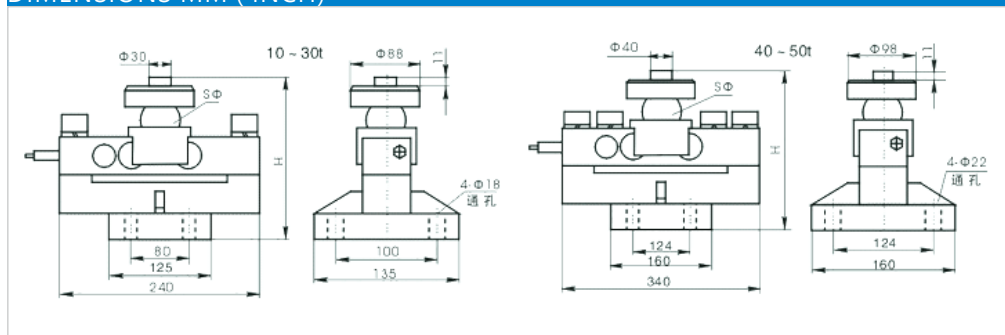
- High accuracy, strong stability
- Good consistency, strong interchangeability, easy installation and maintenance
- High reliability, strong anti-interference ability
- Self-identification function for fault diagnosis
- Long transmission distance, high communication speed, significant anti-cheating effect



## SPECIFICATION

Capacity	t	10,20,25,30,40,50
Accuracy class		OIML R60 C3
Maximum number of load cell intervals	nmax	3000
Minimum number of load cell intervals	vmin	Emax/7500
Rated output	counts	1000000
Combined error	%FS	≤ ±0.020
Measurement rate	Hz	10
Creep	(%FS/30min)	≤ ±0.016
Temperature effect on sensitivity	(%FS/10℃)	≤ ±0.011
Temperature effect on zero	(%FS/10℃)	≤ ±0.019
Excitation voltage	V DC	5.4~15
Communication interface		RS 485/4
Number of bus addresses		Maximum 32
Communication baud rate	Bps	19200
Maximum communication distance	m	1000
Compensated temperature	(℃)	-10~+40
Operating temperature	(℃)	-20~+60
Safe overload	(%FS)	120
Ultimate overload	(%FS)	150
Level of protection		IP68
Cable length	m	16
Cable specification		Ductor shielded cable, φ6.2

## DIMENSIONS MM ( INCH)



Dimension (mm)	H	Sφ
10t	195	50
20-30t	225	76
40t,50t	267	82

## WIRING

Red: V+   Black: GND   Yellow: Rx+   Brown: Rx-   Blue: Tx+   White:Tx-   Transparent